

# ST2500 SEEDING LINE



# Williames

Leading by Innovation



## Williames ST2500 SEEDING LINE

**FILLS SEEDS COVERS WATERS**

**2500 TRAYS PER HOUR**

**ADJUSTS TO FIT ALL TRAYS**

*All known trays can be filled and  
seeded with all types of seeds*



**DIBBER DRUM—PARABOLIC POINTS  
SHAPE INDENTATION WITHOUT  
COMPACTING THE GROWING MEDIA**



**Williames Pty Limited**  
**A B N 42 004 320 834**  
103 Butlers Track Warragul  
Victoria 3820 Australia  
phone: +61 3 5623 5755  
fax: +61 3 5623 5165  
email: [sales@whiti.com.au](mailto:sales@whiti.com.au)  
web: [www.williames.com](http://www.williames.com)

# ST2500 SEEDING LINE



# Williames

Leading by Innovation



**Williames ST2500 Seeding Line** combines several Williames machines to produce a throughput of up to 2500 trays per hour.

**Williames ST2500 Seeding Line** is fast and accurately achieves seed singulation. It is robustly constructed and reliable with low maintenance resulting in high productivity.

## ST2500 SEEDING LINE INCLUDES

- Tray De-Stacker
- FNC Filler with Soil Accelerator
- Scraper
- Side Tray Cell Compaction Roller
- Soil Rotor + High Capacity Motor
- Scraper
- Compaction Roller—full tray width
- Vee Plough (Scraper)
- Rotary Brush
- Seeder with 5 Singulator Bars
- Seeder Conveyor + High Capacity Motor and Gearbox on Conveyor
- Dibber Drum
- Wider than standard Seed Hopper
- Single Pattern Seed Drum
- Heavy Duty Drive Motors & Transmission
- Vacuum Pump
- Single or three phase power

- Parallelogram required when regular tray height changes are to be made:

- ◇ Primary soil leveller
- ◇ Side cell compression wheels
- ◇ Soil levelling rotor
- ◇ Compression roller and scraper
- ◇ Twin-sided soil removal
- ◇ Soil scraper

- Wide V5 Vermiculite Coverer
- Wide DC Watering Tunnel
- Stainless Steel Chains
- 8 M Take-Up Conveyor
- Automatic Tray Stacker
- Push Loader

## OPTIONS

- Additional Single Pattern Seed Drum(s)
- Needle Drum and Needle Hopper

**Williames Pty Limited**  
**A B N 42 004 320 834**  
103 Butlers Track Warragul  
Victoria 3820 Australia  
phone: +61 3 5623 5755  
fax: +61 3 5623 5165  
email: sales@whiti.com.au  
web: www.williamess.com

# ST2500 SEEDING LINE



# Williames

Leading by Innovation

## WILLIAMES ST2500 SEEDING LINE

assembles several powerful machines to produce a throughput of up to 2,500 trays per hour.

The **ST2500 Seeding Line** is very fast while accurately achieving seed singulation. Robustly built it is extremely reliable with low maintenance and high productivity saving time & money.

## FEATURES

- Twin Automatic Tray De-stacker
- Soil Accelerator
- FNC Universal Filler
  - ◇ Parallelogram
  - ◇ Primary soil leveller
  - ◇ Side cell compression wheels
  - ◇ Soil levelling helicopter rotor
  - ◇ Compression roller & scraper
  - ◇ Twin-sided soil removal
  - ◇ Soil scraper
  - ◇ Rotary brush
- ST2500 Seeder
- Wide V5 Vermiculite Coverer
- Wide DC Watering Tunnel to take trays turned across the conveyor

## OPTIONS

### AUTOMATIC TRAY STACKER & PUSH LOADER

- 8 Metre Take-Up Conveyor to continuously move 2,500 trays per hour
- Automatic Tray Stacker to stack 150 trays in a block
- Tray Push Loader
  - ◇ Pushes two blocks of 150 trays
  - ◇ 300 trays pushed onto a trailer with two moves of the Push Loader
  - ◇ Operator fingertip control to push load 150 trays
- Additional Seed Drums, various



**ST2500 Push Loader** (BELOW) can push filled and seeded trays off the conveyor in blocks of 150 trays onto waiting trailers further reducing the number of times that trays are handled.



The **Stainless Steele Slat Pusher Conveyor** (ABOVE) with the **Automatic Tray Stacker** (END OF IMAGE, ABOVE) stacks trays into blocks of 10–150 trays that are moved off the **Pusher Conveyor** by the **Push Loader** (LEFT) to be quickly loaded onto the waiting trailers

**Williames Pty Limited**  
**A B N 42 004 320 834**  
103 Butlers Track Warragul  
Victoria 3820 Australia  
phone: +61 3 5623 5755  
fax: +61 3 5623 5165  
email: sales@whiti.com.au  
web: www.williames.com

# ST2500 SEEDING LINE



# Williams

Leading by Innovation



## AUTOMATIC TRAY STACKER

- The **Automatic Tray Stacker** (*above*) stacks 2,500 trays per hour into blocks of 150 trays to a stack



## PUSH LOADER

- The **Push Loader** (*left*) loads two blocks of 150 trays — a total of 300 trays onto a waiting trailer

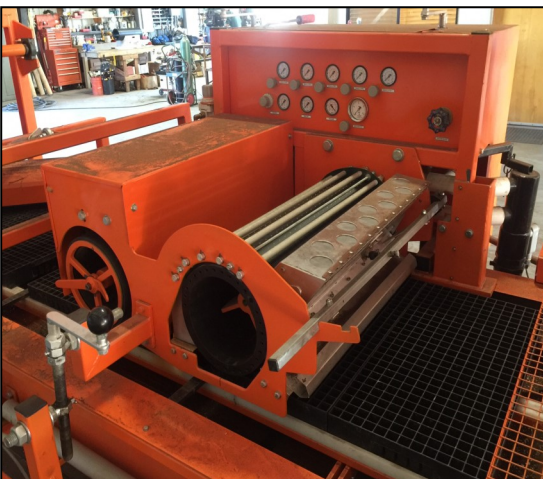
**Williams Pty Limited**  
**A B N 42 004 320 834**  
103 Butlers Track Warragul  
Victoria 3820 Australia  
phone: +61 3 5623 5755  
fax: +61 3 5623 5165  
email: [sales@whiti.com.au](mailto:sales@whiti.com.au)  
web: [www.williames.com](http://www.williames.com)



← **FNC UNIVERSAL FILLER** is suited to high speed filling of all types of trays and a wide range of pots and punnets. It includes:

- Rollers support belt feed hopper conveyor
- Soil accelerator, soil scraper, compacting roller, & powered levelling brush adjusts soil media density giving even, compact consistency
- Integrated soil return units recycle soil mix to prevent wastage and soil contamination
- Fingertip controls vary speed of soil flow into the tray, soil density in tray & tray speed
- Clod breaker, soil beater powered feed roller.
- 1.8 cubic metre capacity

Robust construction means low maintenance and high productivity.



← **ST2500 SEEDER** is designed for fast, very high volume commercial seeding operations. The ST2500 accurately places seed and controls the depth of the placement of the seed to suit all known seeds in all types of trays.

- Fills & Seeds two trays crosswise (east-west) per single rotation of the Dibber & Seeder Drums
- Can sow all known seeds
- Places a single seed per cell.
- Rapidly adjusts to suit all trays

Robust construction means low maintenance and high productivity.



← **WIDER V5 VERMICULITE COVERER** adds a covering layer to the tray after the tray has been seeded. The V5 dispenses an even layer of cover and has automatic START / STOP.

- Simple to operate
- Trays automatically activate START / STOP
- Adjustable feed-gate
- Ribbed belt feed for precision dispensing of the cover
- Viewing glass allows the operator to assess the level of the hopper contents

Robust construction means low maintenance and high productivity

#### Option

- Vermiculite return (as shown, left)



← **WIDER DC WATERING TUNNEL** accommodates trays positioned sideways across the conveyor after it has been filled, seeded and covered. Water is sprayed across the tray as it passes underneath.

- The amount of water can be easily adjusted to suit different requirements
- Manufactured from stainless steel to perform in demanding corrosive environments

Robust construction means low maintenance and high productivity.



# Williams

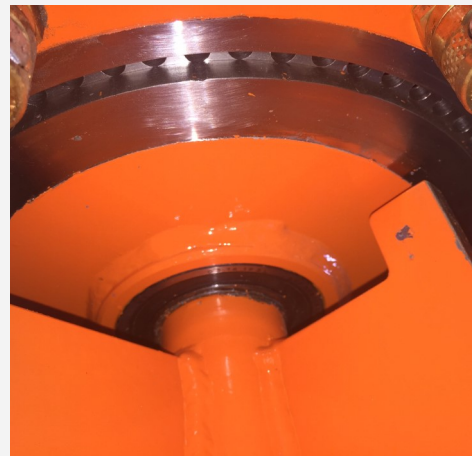
Leading by Innovation



ABOVE: NEEDLE DRUMS PACKED IN ALUMINIUM CONTAINERS & AIRFREIGHTED TO USA



ABOVE: DEEPER WIDER DUAL TRAY CLEATED CONVEYOR



ABOVE: SEED DRUM VALVE PLATE + HEAVY DUTY SHAFT & BEARINGS

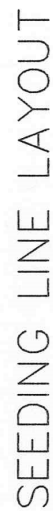
#### DIMENSIONS OVERALL SEEDING LINE

	METRIC	IMPERIAL
LENGTH	27,890	91' 06"
WIDTH	4,245	13' 11"
HEIGHT	3,010	9' 10"
WEIGHT	4,825 kgs	10,615 lbs

**Williams Pty Limited**  
**A B N 42 004 320 834**  
 103 Butlers Track Warragul  
 Victoria 3820 Australia  
 phone: +61 3 5623 5755  
 fax: +61 3 5623 5165  
 email: sales@whti.com.au  
 web: www.williames.com



## Leading by Innovation



	A FINAL LAYOUT		G.B 18.1.16	ITEM	PART No	DESCRIPTION		QTY
	UNAUTHORISED COPYING OF THIS DRAWING IS STRICTLY PROHIBITED							
	MACHINE NAME:			A3	DRG No.	TW-001	REV A	
	ST2500 SEEDER			MAT'L		QTY:	OFF	
	DRAWING TITLE:			SEEDER LAYOUT				
	DRAWN: G.B			DATE: 26.8.15				
	CHK'D:			WEIGHT:				
	WILLIAMES PTY LTD			SCALE: N.T.S				
	BUTLERS TRACK WARRAGUL VICTORIA AUSTRALIA 3820			GEN TOL: ±0.125				
	REVISIONS:							