

ST1000 SEEDING LINE



Williams

Leading by Innovation



Williams ST1000 SEEDING LINE

FILLS SEEDS COVERS WATERS

1000 TRAYS PER HOUR

ADJUSTS TO FIT ALL TRAYS

*All known trays can be filled and
seeded with all types of seeds*



**DIBBER DRUM — PARABOLIC POINTS
SHAPE INDENTATION WITHOUT
COMPACTING THE GROWING MEDIA**



Williams Pty Limited
A B N 42 004 320 834
103 Butlers Track Warragul
Victoria 3820 Australia
phone: +61 3 5623 5755
fax: +61 3 5623 5165
email: sales@whti.com.au
web: www.williames.com

ST1000 SEEDING LINE



Williames

Leading by Innovation



Williames ST1000 Seeding Line combines several Williames machines to produce a throughput of up to 1000 trays per hour.

Williames ST1000 Seeding Line provides fast throughput with accurate seed singulation. It is robustly constructed, extremely reliable with low maintenance and high productivity—saving time & money.

ST1000 SEEDING LINE INCLUDES

- Universal Filler with Bin Vibrator
- Extension Boards to Hopper to increase soil capacity
- ST1000 Seeder with 5 Singulator Bars
- Single Pattern Seed Drum
- Dibber Drum
- Standard Seed Hopper
- 6.22 Metre Conveyor
- High Capacity Motor & Gear Box for Main Conveyor
- Vacuum Pump
- V2 Vermiculite Coverer
- DC Watering Tunnel
- Single or three phase power

OPTIONS

- Needle Drum and Needle Seed Hopper
- Stainless Steel Chains
- Tray De-Stacker
- Digital Tray Counter

WILLIAMES NEW UNIVERSAL FILLER has been designed in response to our customers requests for greater flexibility in the size and type of trays that can be used with the change from one type to another done with a minimum amount of fuss.

WILLIAMES NEW UNIVERSAL FILLER meets this brief, and gives growers the chance to rapidly change their production line to seed various plant types into different tray sizes and tray configurations.

Williames Pty Limited
A B N 42 004 320 834
103 Butlers Track Warragul
Victoria 3820 Australia
phone: +61 3 5623 5755
fax: +61 3 5623 5165
email: sales@whiti.com.au
web: www.williames.com



ST1000 Seeder—First, we ensure the indentation for the seed is centred in the cell at the correct depth to suit the particular seed being sown. This is achieved with the timed dibber and specially shaped convoluted dibber points.

Seeder head and 3 singulator bars with variable pressure control gives complete singulation control to maintain absolute placement accuracy of single seeds.

FEATURES

- Accurate seed placement at all speeds
- 32" pitch cleats centre the conveyor to positively engage the tray
- Simple operation and adjustments
- Timing is consistent regardless of the speed of seeding
- Seed drum, dibber drum and cleated conveyor are directly driven together maintaining 100% accuracy and timing
- Accurate singulation achieved by 5 singulator bars (air brushes) on a large diameter seed drum
- Quickly change seeds to sow different types of seed
- Quick and easy adjustment of the tray width



ST1000 SEEDING LINE



Williames

Leading by Innovation

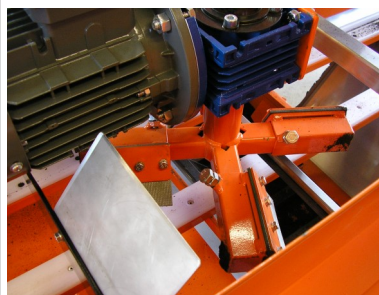
UNIVERSAL FILLER is suited to high speed filling of a wide range of trays, pots, and punnets. It includes:

- High Capacity Drive
- Adjustable Soil Scraper
- Soil Rotor
- Compression Roller and Scraper
- Rotary brush brushes the cell below top of the tray



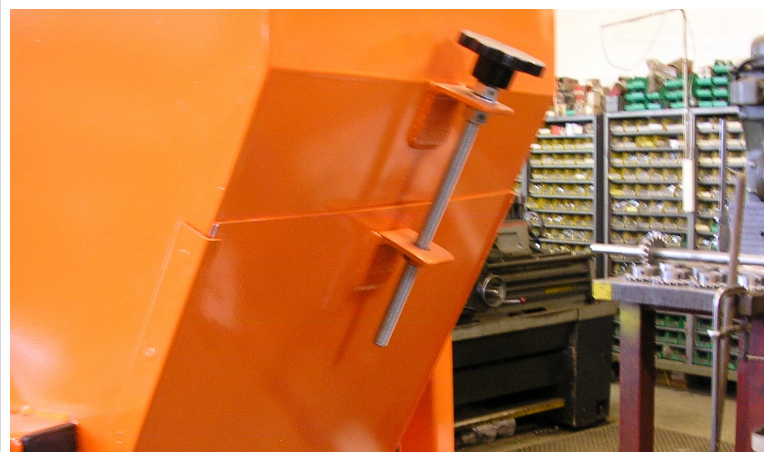
MORE IMAGES *CLOCKWISE FROM LEFT:*

- Variable Speed Soil Rotor distributes soil across the width of the tray to fill cells evenly, giving accurate cell density control
- Extension Boards to increase capacity of soil hopper
- High Capacity Drive Motor
- Williames Filler Bin Vibrator



V2 VERMICULITE COVERER (*RIGHT*) adds an even, covering layer to the tray after the tray has been seeded and can operate at variable speeds.

- Simple to operate
- Trays trip the automatic **START / STOP** activation
- Adjustable feed-gate (*right*) shows hand-knob screw adjuster for the material flow door
- Ribbed roller for precision dispensing of the cover
- Viewing glass allows operator to assess level of hoppers contents
- Robust construction means low maintenance and high productivity



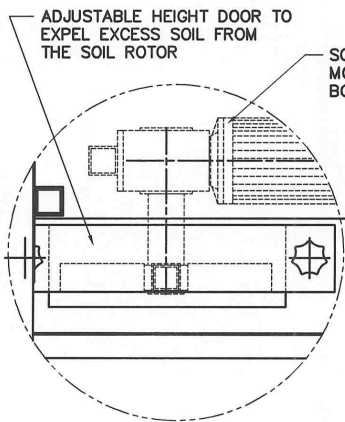
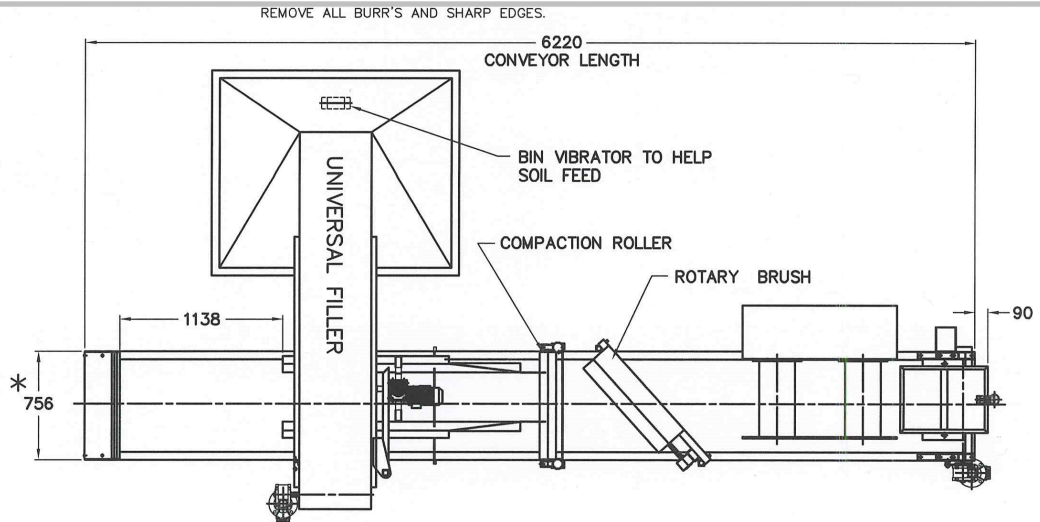
WILLIAMES DC WATERING TUNNEL (*RIGHT*) waters the tray after it has been filled, seeded and covered. Water is sprayed across the width of the tray as it passes underneath.

- The amount of watering can be easily adjusted to suit different moisture requirements
- Robust construction means low maintenance giving high productivity, saving time and money

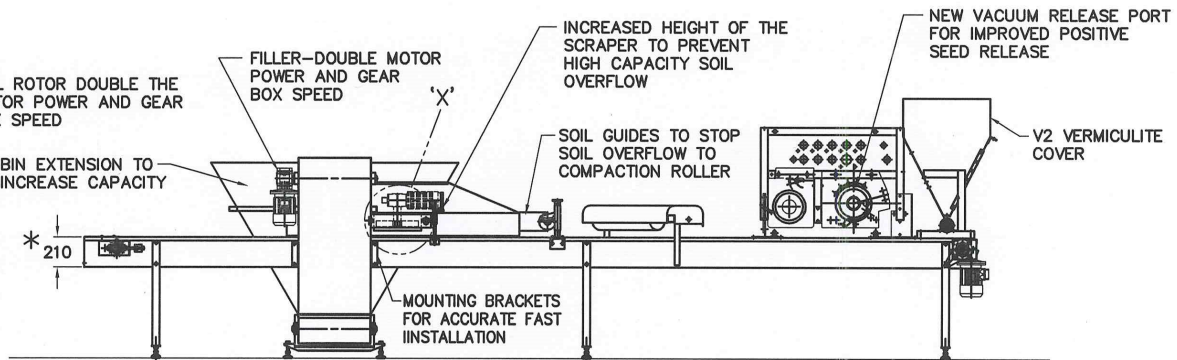




* NEW ST1000 PLUS HAS A WIDER AND DEEPER BODY THAN THE ST750 TO PROVIDE A HIGHER CAPACITY FOR THE RETURN OF THE EXCESS SOIL TO THE UNIVERSAL FILLER.



ENLARGED DETAIL 'X'



REVISIONS:

ITEM	PART No	DESCRIPTION	QTY
UNAUTHORISED COPYING OF THIS DRAWING IS STRICTLY PROHIBITED			
MACHINE NAME:		A3 DRG No.	ST1-000
ST1000 SEEDER		MAT'L	QTY: OFF
DRAWING TITLE:		DRAWN: G.B	DATE: 2.10.14
SEEDING LINE LAYOUT		CHK'D:	WEIGHT:
WILLIAMES PTY LTD		SCALE: 1:25	GEN TOL: ±0.125
BUTLERS TRACK WARRAGJIL VICTORIA AUSTRALIA 3820			

USED ON	QTY