

Yarram Standard

WEDNESDAY, DECEMBER 9, 2009 — \$1

YOUR COMMUNITY NEWSPAPER SINCE 1875



Quality control: Robyn Pearson, seed orchard co-ordinator, inspects the progress of seedlings planted as part of the commissioning crop of some three million pines during the opening of the \$11 million container facility on Monday. More photos on page 15.

\$11 million nursery project opens

Business grows

Monday before a gathering of dignitaries, workers and contractors.

The international board held a meeting at the Gelliondale office before the launch of the facility, which will more than double capacity to eight-and-a-half million trees a year and create 11 equivalent full-time jobs.

The six hectare facility will produce pines and eucalypts for the company's plantations around Victoria and South Australia, and help fast-track recovery

of plantations lost during this year's bushfires.

Construction injected significant money into the Yarram economy, with many local trades people involved.

Mr Christensen described the Gelliondale plant as "world class".

"We are very proud of what has been accomplished. This is a world class nursery and it is really important to us to see this nursery now completed," he said.

The president told the *Standard* the Gelliondale facility was unique, as HVP could now grow trees specifically to meet quantity and quality specifications, rather than rely on other nurseries.

"We are pleased with what we have got here and we are committed to being here for a long time," Mr Christensen said.

New Wellington Mayor, Cr Scott Rossetti said the opening was great for Wellington and the Yarram community.

"Wellington is pleased that HVP had the confidence to invest \$11 million in this facility," he said.

"This new facility will have many benefits for the shire, not just in improving water use but also in creating extra employment opportunities.

"When the Murray Goulburn facility closed, jobs were lost and many felt the future of Yarram was grim, and that this facility was announced.

Continued on page 9.

FIRE SEASON SPECIALS

Available from December 9 to December 16.



AUSSIE FIRE PUMP	WITH HONDA	\$690
ORANGE FIRE PUMP	WITH ROBIN	\$590
FIRE HOSE KIT	2"	\$160
FIRE HOSE KIT	1 1/2"	\$120
FIRE RAKE	CYCLONE	\$55
KNAPSACK	16lt	\$210
KNAPSACK	TRACTOR MOUNT	\$295
FIRE SLIP ON UNIT	400LT DAVEY PUMP	\$2150
GENERATOR	5.9KVA GENTECH	\$1650
GENERATOR	3.4KVA GENTECH	\$1150
TANK IN FRAME	1000LT	\$290

71 Rodgers St YARRAM Phone 5182 5148 | Fax 5182 5388

BROWN|WIGG

YARRAM
6 DAY
WEATHER
FORECAST

WED
DEC 9
8° 24°
mostly sunny

THUR
DEC 10
10° 25°
late shower

FRI
DEC 11
8° 20°
showers

SAT
DEC 12
10° 23°
possible shower

SUN
DEC 13
9° 23°
possible shower

MON
DEC 14
8° 24°
mostly sunny

Business grows

Continued from page 1.

"This is the start of new growth for Yarram." Gippsland MP Darren Chester told the *Standard* the economic boost was timely and welcome.

"I would like to congratulate the HPV board, management and staff for their commitment to the region and wish them every success in the future," he said.

Eastern Victoria Region MLC Johan Scheffer said the plant would help to continue to provide quality timber for Victoria.

The State Government contributed \$150,000 to the project as a regional investment initiative.

"HVP is a great corporate citizen; you are bringing new jobs and the community and I thank you for your contribution," Mr Scheffer said.

Nursery manager Chris Barclay paid tribute to his staff for their contribution to the plant design.

Several years in the planning, the project was completed on time and on budget.

Four new jobs have already been created during the planting of a commissioning crop of three million pines and one-and-a-half million eucalypts.

Young trees are set in large trays moved on rollers to increase efficiency and workers' safety.

Seedlings will be grown in 3750 large trays filled with growing medium by machine and moved throughout various stages to gradually harden the young trees. Those stages are an 80m by 60m glasshouse, a shadehouse, an ongrowing area and despatch area.

Automated irrigation and climate control will improve water efficiency by 500 per cent and rainwater will be harvested from the facility.

Historic hotel passed in

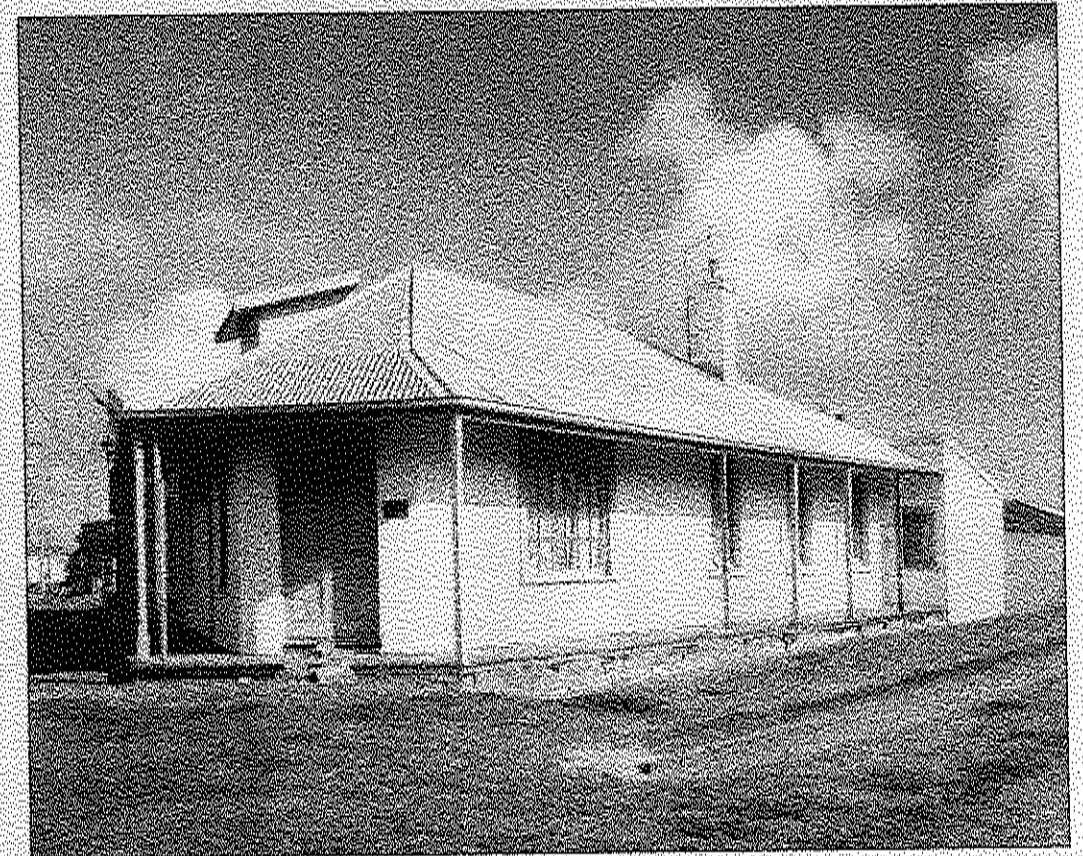
PORT ALBERT'S historical Derwent Hotel (Circa 1858) went under the hammer on Saturday, November 28 before a large crowd.

Selling agent Greg Tuckett advised that the historic building which has played a pivotal role in the history of Port Albert was passed in on a vendor's bid of \$300,000.

"We have had a lot of interest in the property from both the local and wider communities in recent weeks," Mr Tuckett said.

"Given the time of year and the number of tourists visiting the area, we would expect that interest to increase, which will hopefully result in the sale of the historic building in the coming weeks."

The former Derwent Hotel is ideally positioned on the main street of Port Albert, with superb water views. The seven room, two storey building is steeped in history. For further details on this property contact Elders Yarram on 5182 6600.



LETTERS LETTERS LETTERS LETTERS LETTERS LETTERS LETTERS

Toora's wetland canned

IT was with great interest and fascination I read the article, "Wetlands take shape" in last week's *Yarram Standard* (Page 5), describing the project which will minimise drainage problems in Yarram by the construction of stormwater retention basins on the ex-railway reserve in Lawler Street.

Although the water depths will vary from 30cm to one metre, with the deepest section being 1.5 metres, the area will not be fenced. I read that landscaping is also planned once the basins are completed.

Funding was secured from both the State and Federal

Community cares

LAST Wednesday something unique took place; as we said a sad farewell to Blake Farley there was evidence of a community coming together and the beating heart of that community was there for all to see.

We were united in grief, and I was proud to call Yarram home. Blake left a huge legacy that will carry on into the future, a truly talented, funny and caring young man who was part of a very special family. I will remember the beautiful words spoken at the service, the haunting voice of Blake singing in his beloved band, and the sight of the people who cared so much and tried to show the family we were with them at this time. RIP Blake





Finished plant: Williams CEO Simon Gough and managing director Geoff Williams inspect the lateral transfer system. The Warragul company was a major contractor with the project.



Touching base: Yarram Traders and Tourism Inc. president Margaret Pellew and Gippsland MP Darren Chester.



Fully automated: nursery operations co-ordinator Kathryn Smith shows the seeding machine to Wellington Shire Council's Cr Jeff Amos and economic development officer Julie Nethercote.



Officially open: Hancock Natural Resource Group president Dan Christensen and HVP Plantations CEO Linda Sewell.

"THE YARRAM STANDARD", Wednesday, December 9, 2009 - PAGE 15



Grand opening: the board of Hancock Natural Resource Group with HVP Plantations CEO Linda Sewell (kneeling), Gelliondale manager Chris Barclay (kneeling) and Gippsland manager Owen Trumper (second from right) attended the opening of the new \$11million Gelliondale nursery facility this week. The board is: Dan Christensen, Bruce McKnight, Court Washburn, Alan Beanland, Alicia Gregory, Ian Ferguson, Karl Kny, Cyril Cabanes and Colin Atkin.



Social day: cutting, setting and lifting. Supervisors Kelli Crapper, Naomi Brand, Theresa Caygill and Evyette Flenely enjoyed the official opening of the \$11million new Gelliondale nursery facility on Monday.